



SARASWATI Education Society's  
**SARASWATI Institute of Technology**

Learn Live Achieve and Contribute

Kharghar, Navi Mumbai - 410 210.

## COMPUTER ENGINEERING DEPARTMENT

### Report on Industrial Visit Kerala "Tea Factory Munnar"

The industrial visit to the Kerala Tea Factory in Munnar was an informative and enriching experience for the students. The visit provided practical exposure to the tea manufacturing process and the functioning of a large-scale production unit. Students gained knowledge about various stages of tea processing, including withering, rolling, fermentation, drying, and packaging. Factory experts explained the importance of quality control, hygiene standards, and modern machinery used in tea production. The visit helped students understand how automation and management systems are used in the agro-based industry. Overall, the industrial visit successfully enhanced students' awareness of industrial operations and real-world applications of technology.

#### Hill Station "Munnar"

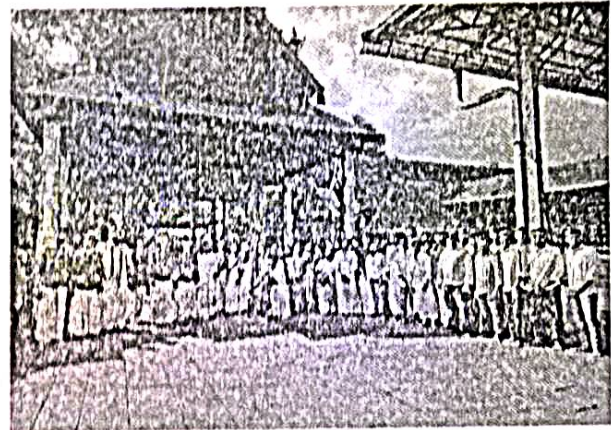
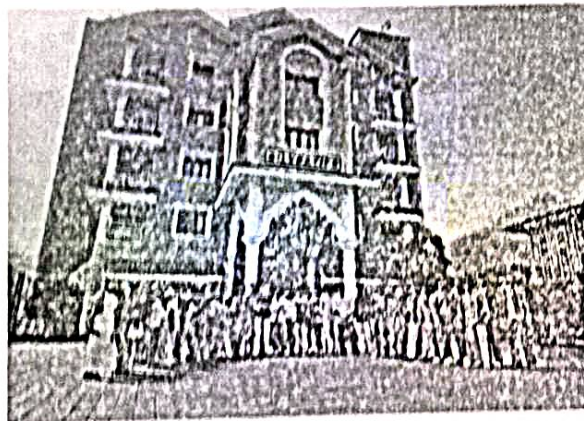
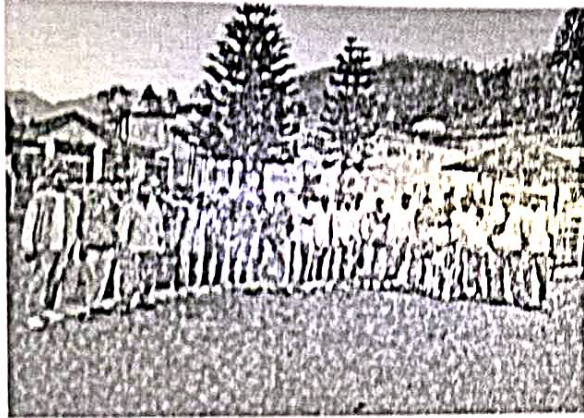
Munnar, surrounded by vast tea plantations and mist-covered hills, was a breathtaking destination. Students explored scenic viewpoints, Eravikulam, and Mattupetty Dam. The cool climate and lush greenery provided a refreshing escape from daily routine. The natural beauty and peaceful environment offered a relaxing and enjoyable experience. The visit allowed students to appreciate the rich biodiversity and eco-friendly tourism practices of the region.

#### Tourist Place "Echo Point & Tea Gardens"

Visiting Echo Point was a fun and memorable experience as students enjoyed hearing their voices echo across the valley. Walking through the tea gardens gave everyone a closer look at tea cultivation and plantation life. The neatly arranged tea bushes, fresh aroma, and scenic views created a delightful atmosphere. Students learned about the hard work of tea pluckers and the importance of sustainable farming. The visit combined learning with leisure, making it a perfect educational tour.

## Religious Place "Ambalappuzha Sree Krishna Temple"

Visiting the Ambalappuzha Sree Krishna Temple was a spiritually enriching experience. The temple, famous for its traditional Kerala architecture and the legendary Palpayasam offering, left a deep impression on the students. The peaceful surroundings and devotional atmosphere created a sense of calm and reverence. The visit provided a meaningful blend of cultural learning and spiritual reflection.




  
IV Coordinator

Mrs. Monika Patil

  
HOD

Ms. Komal Jadhav

  
Principal  
Dr. D. R. Suroshe